

Elliott Clock Catalogue 1962

The name Elliott of London, England has for nearly 100 years been synonymous with fine timekeeping. In an age of mass production when quantity tends to come before quality, it is encouraging to note the continuing demand for Elliott of London clocks.

Every Elliott of London clock is of pleasing design and fine craftsmanship, guaranteed to give years of dependable performance, making them treasured possessions in many homes throughout the world.

Produced in a well equipped modern factory on the outskirts of London, England, every Elliott of London clock is the result of the accumulated knowledge acquired over nearly 100 years in the manufacture of fine timepieces, a tradition handed down from generation to generation of the Elliott family who still control this famous business.

All timber used in the cases is carefully selected and dried in specially heated chambers. These beautifully produced timepieces add dignity and charm to their surroundings, whether antique or contemporary, while their precision movements assure life-long perfection in timekeeping.

8 DAY LEVER TIMEPIECES

2



No. 2894

MAHOGANY

Antique Dial.
Raised silvered hour
circle.

Height 5 $\frac{1}{4}$ "

Length 8"

Depth 3 $\frac{1}{4}$ "

No. 2983
WALNUT
Antique Dial.
Raised silvered hour
circle.

Height 8 $\frac{3}{4}$ "

Length 5 $\frac{3}{4}$ "

Depth 2 $\frac{3}{4}$ "

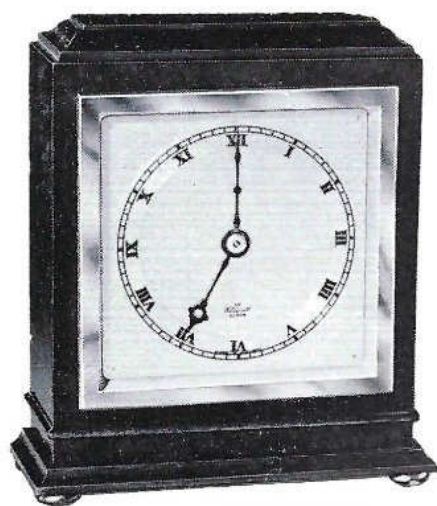


3

8 DAY LEVER TIMEPIECES



No. 2969
MAHOGANY
4" satin brass finish
Bezel, with
engraved silvered
Dial.
Height 6½"
Length 5½"
Depth 2½"



No. 2198
MAHOGANY
4" satin brass Bezel,
silvered Dial.
Height 6"
Length 5¼"
Depth 3¼"

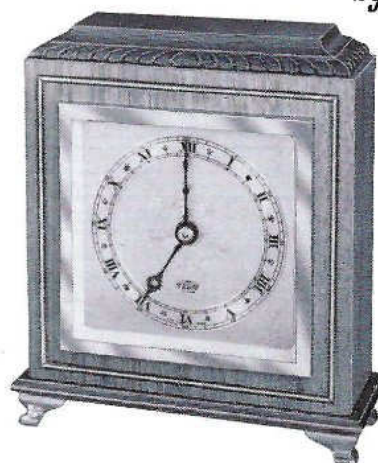
DESIGNED BY EXPERTS
BUILT BY CRAFTSMEN

4

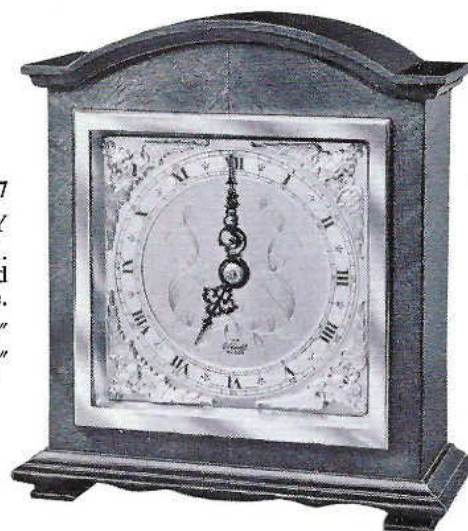
8 DAY LEVER TIMEPIECES



No. 2968
MAHOGANY
4" satin brass finish
Bezel, engraved
silver Dial.
Height 6¾"
Length 5¾"
Depth 2¾"



No. 2937
MAHOGANY
4" Gilt Bezel.
Gilt Dial, raised
silvered hour circle.
Height 6¼"
Length 5¾"
Depth 3"



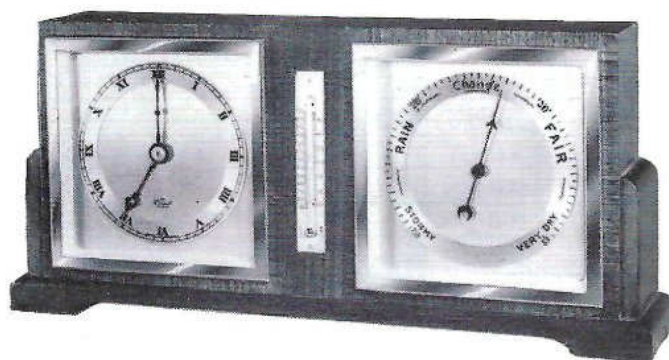
DESIGNED BY EXPERTS
BUILT BY CRAFTSMEN

5

8 DAY LEVER TIMEPIECES



No. 2978
WALNUT or
MAHOGANY
6" satin brass Bezel,
silvered Dial.
Height 9½"
Length 8½"
Depth 2¾"



No. 2899
WALNUT
8 day Lever Timepiece with Barometer and
Thermometer. Silvered Dial.
Height 5¼" Length 11¼" Depth 2¾"

DESIGNED BY EXPERTS
BUILT BY CRAFTSMEN

6

8 DAY LEVER TIMEPIECES



No. 2974
OAK
6" antique Bezel
and Dial.
Height 9½"
Length 7¾"
Depth 2¾"

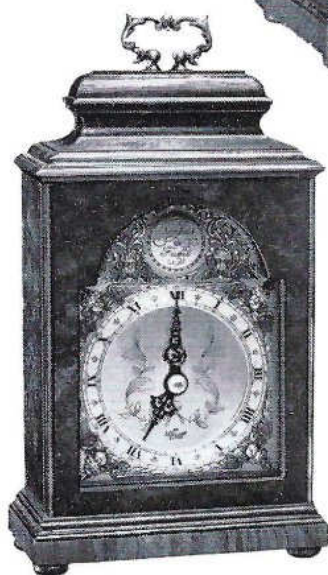
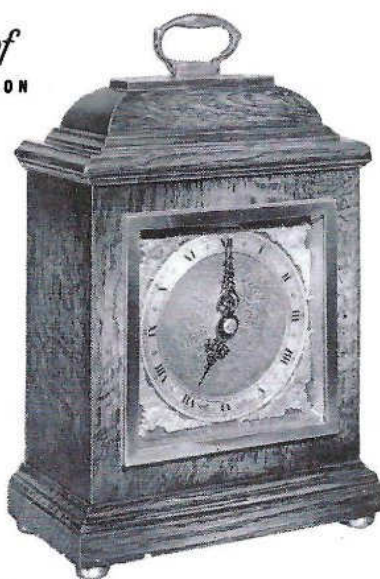


No. 2916
WALNUT
4" gilt Bezel, gilt cast corner Dial, engraved centre.
Height 5¾" Length 8¾" Depth 2½"

DESIGNED BY EXPERTS
BUILT BY CRAFTSMEN



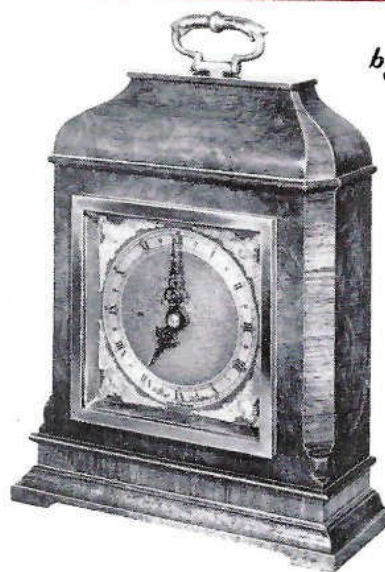
No. 2823
WALNUT OR MAHOGANY
 Antique brass mounted Dial with silvered hour circle.
 Height 9"
 Length 6"
 Depth 3½"



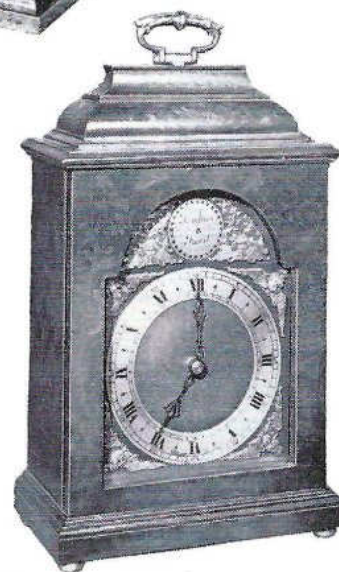
No. 2891
WALNUT
 Antique brass mounted Dial with raised silvered hour circle.
 Height 9¼"
 Length 5"
 Depth 3¼"



No. 2825
WALNUT or MAHOGANY
 Antique brass mounted Dial with raised silvered hour circle.
 Height 9"
 Length 6½"
 Depth 3½"

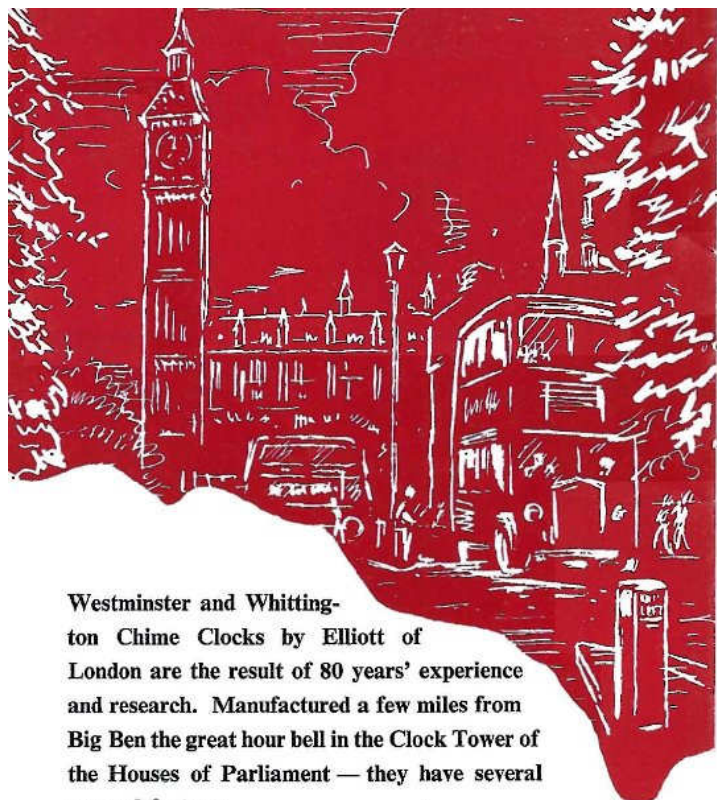


No. 2822
WALNUT or MAHOGANY
 Antique brass mounted Dial with silvered hour circle.
 Height 11"
 Length 6½"
 Depth 3½"



DESIGNED BY EXPERTS
 BUILT BY CRAFTSMEN

DESIGNED BY EXPERTS
 BUILT BY CRAFTSMEN

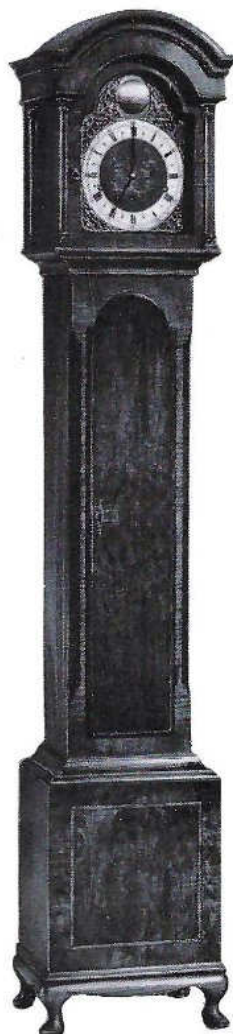


Westminster and Whittington Chime Clocks by Elliott of London are the result of 80 years' experience and research. Manufactured a few miles from Big Ben the great hour bell in the Clock Tower of the Houses of Parliament — they have several unusual features.

A unique action automatically switching off the chime at 11 p.m. until 7 a.m. ensuring the lightest sleeper is not disturbed at night. Either Chime — Westminster or Whittington — can be selected by the mere touch of a knob, while the chimes can be completely shut off by a silencing lever when not required. Every clock is fitted with a 7 jewel lever escapement, this ensures that there is no interruption to its accurate timekeeping, if moved when in action or set on an uneven surface.

GRANDMOTHER CLOCKS

10



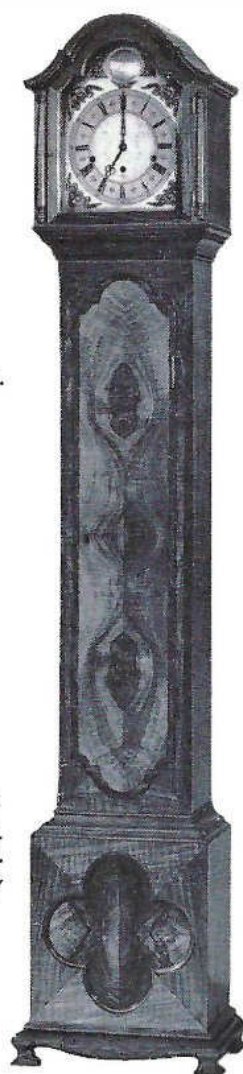
No. 413
Lacquer Case.
Gilt Dial.
Height 5' 5"



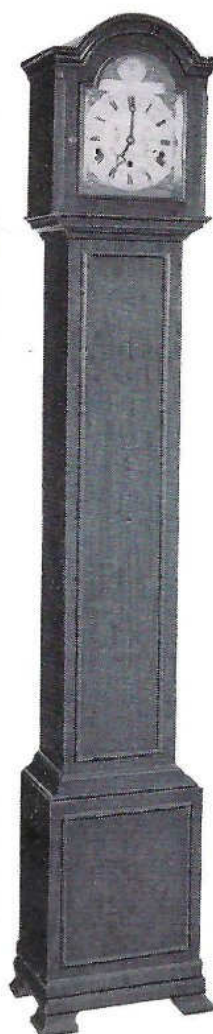
No. 410
Walnut Case.
Antique Dial.
Height 5'



No. 412
Mahogany Case.
Antique Dial.
Height 5'



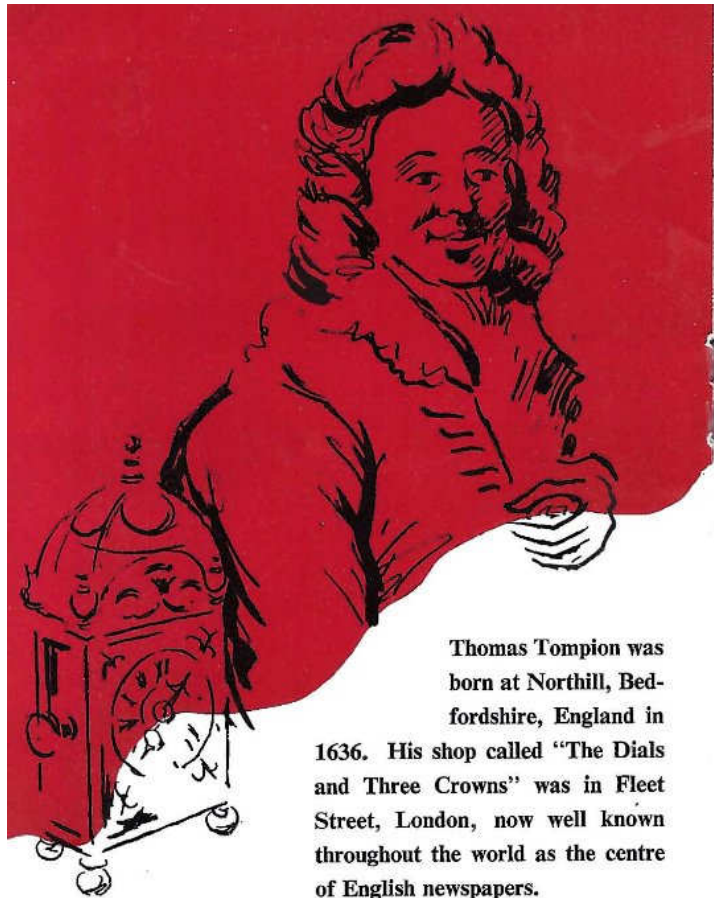
No. 411
Walnut Case.
Antique Dial.
Height 5' 6"



No. 406
Mahogany Case.
Antique Dial.
Height 5'

No. 413
Walnut or
Mahogany Case.
Antique Dial.
Height 5' 5"





Thomas Tompion was born at Northill, Bedfordshire, England in 1636. His shop called "The Dials and Three Crowns" was in Fleet Street, London, now well known throughout the world as the centre of English newspapers.

He was one of the earliest clockmakers responsible for raising the standard of English clockmaking, some of his finest specimens were made in the late 17th century. Known as the Father of English Clockmaking he was leading watchmaker to the Court of King Charles II. Tompion died in 1713 and is buried in Westminster Abbey.

No. 5453 is a reproduction of one of his finest Basket top patterns.

MANTLE CHIME CLOCKS

14

by  of LONDON



No. 5453

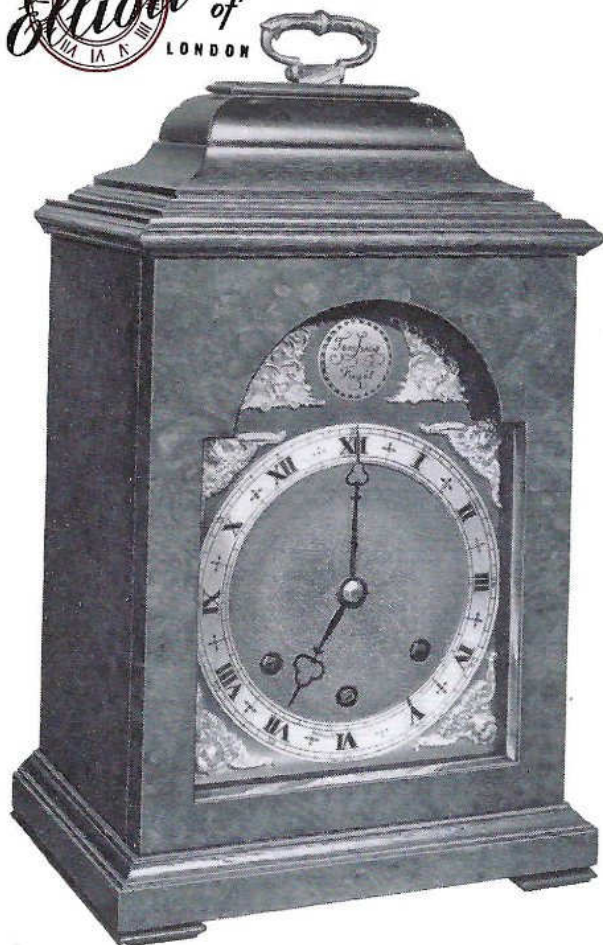
Walnut or Mahogany Case. Antique Dial.

Height 12 $\frac{1}{4}$ " Length 8 $\frac{3}{4}$ " Depth 5"

DESIGNED BY EXPERTS
BUILT BY CRAFTSMEN

15

MANTLE CHIME CLOCKS



No. 5246

Burr Walnut Case. Antique Dial.

Also in Lacquer, Black or Red.

Height 15" Length 9" Depth 6½"

DESIGNED BY EXPERTS
BUILT BY CRAFTSMEN

16

MANTLE CHIME CLOCKS



No. 1016

Mahogany Case. Antique Dial.

CHIME SIZE.
Height 14½"
Length 10½"
Depth 6½"

STRIKE SIZE.
Height 12½"
Length 8½"
Depth 6"

TIMEPIECE SIZE.
Height 9¾"
Length 6½"
Depth 3½"

DESIGNED BY EXPERTS
BUILT BY CRAFTSMEN

17

MANTLE CHIME CLOCKS



No. 5454

Walnut Case. Silvered engraved Dial.
Height 11½" Length 9¾" Depth 6"

DESIGNED BY EXPERTS
BUILT BY CRAFTSMEN

18

MANTLE CHIME CLOCKS



No. 5452

Walnut or Mahogany Case. Antique Dial.
Height 12½" Length 9" Depth 5"

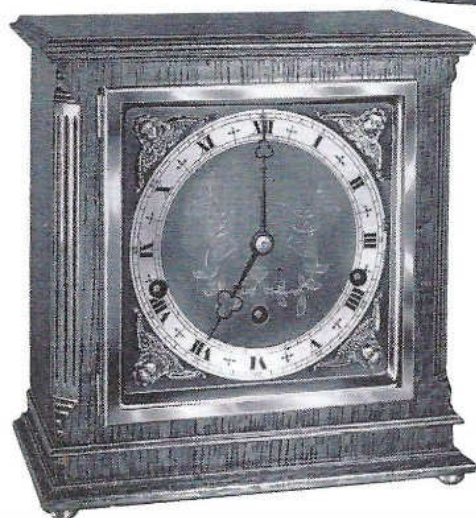
DESIGNED BY EXPERTS
BUILT BY CRAFTSMEN

19

MANTLE CHIME CLOCKS



No. 5450
MAHOGANY
6" gilt Bezel
and Dial,
raised silvered
hour circle.
Height 9½"
Length 8½"
Depth 5"



No. 5430
OAK
6" Antique brass
Bezel and Dial,
raised silvered
hour circle.
Height 9"
Length 8¾"
Depth 5¼"

DESIGNED BY EXPERTS
BUILT BY CRAFTSMEN

MANTLE CHIME CLOCKS

20

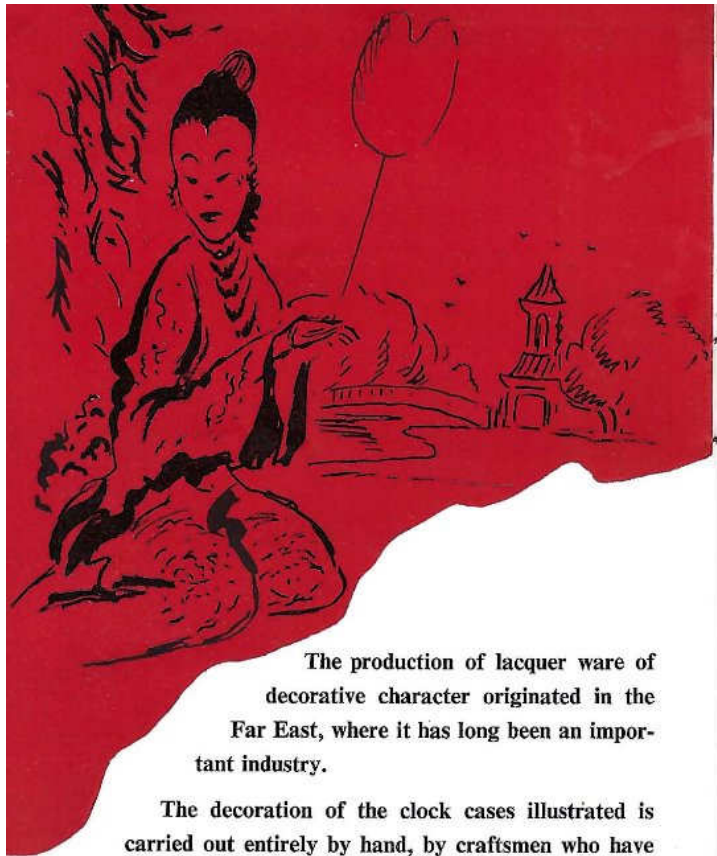


Elliott Clocks are not mass produced,
each clock is individually made and
assembled with every care and attention.



No. 5437
Walnut Case, 6" Gilt Bezel and corner Dial,
raised silvered hour circle.
Height 9" Length 11¾" Depth 4½"

DESIGNED BY EXPERTS
BUILT BY CRAFTSMEN



The production of lacquer ware of decorative character originated in the Far East, where it has long been an important industry.

The decoration of the clock cases illustrated is carried out entirely by hand, by craftsmen who have acquired this age old skill which has been handed down from generation to generation.

Lacquer is a varnish made from shellac which is obtained from the Lac insects (*Coccus Lacca*) found in the forests of Assam and Thailand, to which is added colouring materials of Gold, Coral, Vermilion and many other colours giving most pleasing effects, the design and finish of the cases illustrated conform faithfully to this age old craft.

LACQUER CLOCKS

22

by  *Elliott* of
LONDON



No. 2822

WHITE, RED OR BLACK LACQUER
Gilt cast corner Dial with raised silvered
hour circle.

Height 11" Length 6½" Depth 3½"

DESIGNED BY EXPERTS
BUILT BY CRAFTSMEN

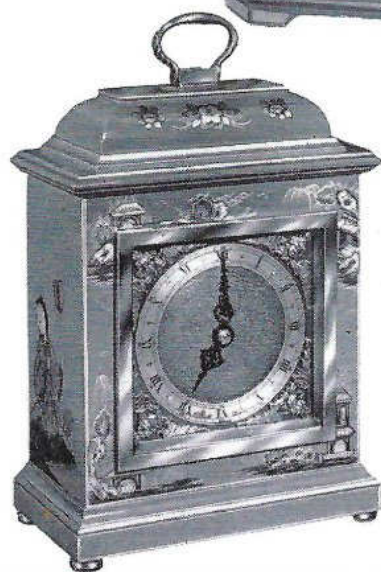
23

LACQUER CLOCKS



No. 2996

WHITE, RED OR
BLACK LACQUER
Gilt Dial.
Height 7 $\frac{3}{4}$ "
Length 6 $\frac{3}{4}$ "
Depth 3"



No. 2823

RED OR BLACK
LACQUER
Gilt cast
corner Dial with
raised silvered
hour circle.
Height 9"
Length 6"
Depth 3 $\frac{1}{4}$ "

24

LACQUER CLOCKS



No. 2894

WHITE, RED OR
BLACK LACQUER
Gilt cast corner
Dial with raised
silvered hour circle.
Height 8"
Length 5 $\frac{1}{4}$ "
Depth 3 $\frac{1}{4}$ "



No. 2890

WHITE, RED OR
BLACK LACQUER
Gilt Dial.
Silvered hour circle.
Height 8"
Length 5"
Depth 3 $\frac{1}{4}$ "



DESIGNED BY EXPERTS
BUILT BY CRAFTSMEN

DESIGNED BY EXPERTS
BUILT BY CRAFTSMEN

25

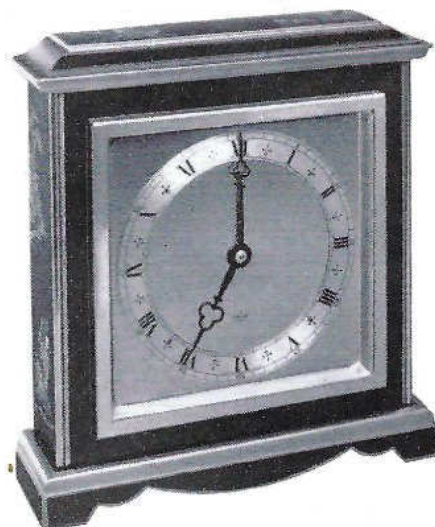
LACQUER CLOCKS



No. 2825

WHITE, RED OR
BLACK LACQUER
Gilt cast corner
Dial with raised
silvered hour
circle.

Height 9"
Length 6½"
Depth 3½"



No. 2978

RED OR BLACK
LACQUER
Gilt Dial.

Height 9½"
Length 8½"
Depth 2¾"

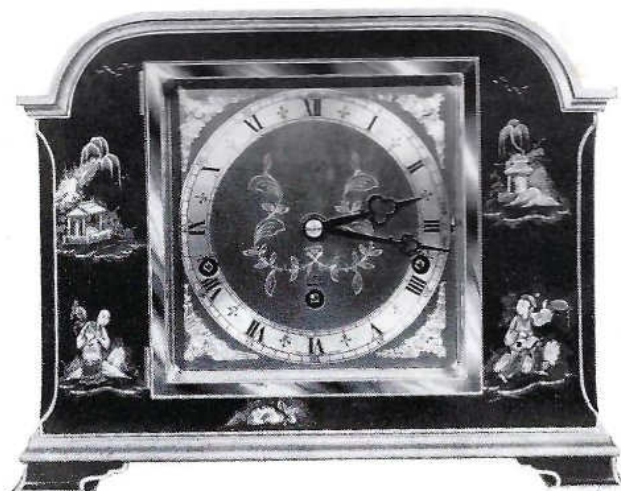
DESIGNED BY EXPERTS
BUILT BY CRAFTSMEN

26

LACQUER CLOCKS



Each and every Elliott Clock carries the
manufacturer's unqualified guarantee against
defective workmanship and materials.



No. 5437

RED OR BLACK LACQUER
Gilt Dial.

Height 9" Length 11¾" Depth 4½"

DESIGNED BY EXPERTS
BUILT BY CRAFTSMEN

CLOCKS

by



of **LONDON**

Josephine's

GIFTS - CARDS - JEWELRY
Town & Country Shopping Center
SOUTH BEND . . . MISHAWAKA, IND.
BLackburn 9-5377

ELLIOTT CLOCKS are distributed exclusively in the
 United States by THE ROYAL WORCESTER PORCELAIN
 CO., INC. NEW YORK 10, NEW YORK

20m.7.62

Printed in England

DESIGNED BY EXPERTS
BUILT BY CRAFTSMEN

JULY 1962

ELLIOTT OF LONDON
CLOCKS

Retail Price List

Fed. Tax Incl.

(Subject to change without notice)

Royal Worcester Porcelain Co., Inc.
NEW YORK LONDON

JULY 1962

RETAIL PRICE LIST, F.T.I.

All ELLIOTT OF LONDON Clocks have 8 day Jewelled Lever Movements

8 DAY TIMEPIECES

113	York Walnut Miniature			
	Grandchild 25" high	\$175.00
1016	Mahogany 10"	130.00
2198	Mahogany	85.00
2200	Thuya	95.00
2822	Walnut or Mahogany	155.00
2823	Walnut or Mahogany	125.00
2825	Walnut or Mahogany	110.00
2849	Oak	95.00
2891	Walnut	135.00
2894	Mahogany Miniature 8"	125.00
2898	Walnut	75.00
2899	Walnut Comb. Clock/Barometer			145.00
2916	Walnut Gilt dial	110.00
2937	Mahogany	95.00
2968	Mahogany	110.00
2968	Ebonized	110.00
2969	Walnut or Mahogany	95.00
2974	Oak	120.00
2978	Walnut or Mahogany	110.00
2983	Walnut	110.00

 $\frac{1}{2}$ HOUR LEVER STRIKE MANTLE CLOCKS

1016	Mahogany	\$250.00
1153	Walnut	225.00

LACQUER TIME PIECES : Black or Red

114	Lincoln Miniature Granddaughter			\$325.00
*2822	Lacquer Time Piece	195.00
2823	Lacquer Time Piece	175.00
*2825	Lacquer Time Piece	155.00
*2890	Lacquer Time Piece	180.00
*2894	Lacquer Time Piece	180.00
*2969	Lacquer Time Piece	110.00
2978	Lacquer Time Piece	160.00
*2996	Lacquer Time Piece	180.00
5246	Lacquer $\frac{1}{4}$ Chime W/W	475.00
5437	Lacquer $\frac{1}{4}$ Chime W/W	395.00

*Available also in White

 $\frac{1}{4}$ HOUR WHITTINGTON/WESTMINSTER
CHIME MANTLE CLOCKS*All lever escapements Whittington/Westminster
Chimes fitted with Night Chime Cut-Out*

1016	Mahogany 15"	\$345.00
	Wall Bracket to hold above	45.00
5246	Walnut	345.00
	Wall Bracket to hold above	45.00
5430	Oak	250.00
5437	Walnut	275.00
5450	Mahogany	265.00
5452	Walnut or Mahogany	275.00
5453	Walnut or Mahogany	295.00
5454	Walnut	295.00

LONG CASE $\frac{1}{4}$ CHIME CLOCKS

406	Mahogany Grandmother	..		\$575.00
410	Walnut Granddaughter	950.00
411	Walnut Grandmother	1100.00
412	Mahogany Grandmother	975.00
413	Walnut or Mahogany Grandmother			750.00
413	Lacquer Grandmother, black or red			1500.00

Elliott of London Clocks

Experience and craftsmanship of three generations are embodied in the production of every ELLIOTT CLOCK. For over three quarters of a century the name ELLIOTT has been synonymous with fine clockmaking; today in a well-equipped factory at Croydon, England, the tradition is being carried on by craftsmen highly skilled in creating fine clocks.

All stages of production are carefully supervised, every clock soundly constructed from best quality materials, finished and tested to the highest possible standard, ensuring peerless quality and value.

Whether your taste leans towards a modern or antique style, there is a model to suit all requirements — a model which is tasteful and pleasing in design, accurate and reliable in performance, a true reflection of the ELLIOTT tradition.

DESIGNED BY EXPERTS

BUILT BY CRAFTSMEN

20M. 7/62

Printed in England

I would like to thank Ben Fulghum for sharing this catalogue.

[Clock Repair Main Page](#)