

Elliott Clock Catalogue 1971

The name Elliott of London, England has for nearly 100 years been synonymous with fine timekeeping. In an age of mass production when quantity tends to come before quality, it is encouraging to note continuing demand for Elliott of London clocks.

Every Elliott of London clock is of pleasing design and fine craftsmanship, guaranteed to give years of dependable performance, making them treasured possessions in many homes throughout the world.

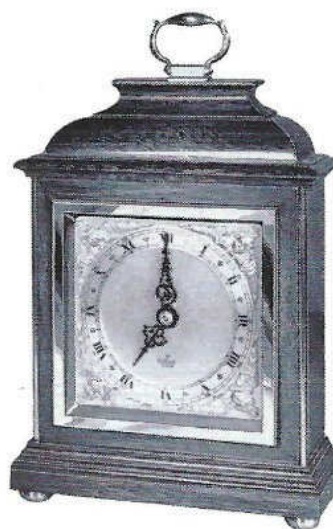
Produced in a well equipped modern factory on the outskirts of London, England, every Elliott of London clock is the result of the accumulated knowledge acquired over 100 years in the manufacture of fine timepieces, a tradition handed down from generation to generation of the Elliott family who still control this famous business.

All timber used in the cases is carefully selected and dried in specially heated chambers. These beautifully produced timepieces add dignity and charm to their surroundings, whether antique or contemporary, while their precision movements assure life-long perfection in timekeeping.

8 DAY LEVER TIMEPIECES

3

by *Elliott* of
LONDON



No. 2983

WALNUT

4" gilt Bezel and corners,
silvered Dial.

Length 5½ ins.

Height 8½ ins.

Depth 2¾ ins.



No. 2849

OAK

4" gilt Bezel
and corners,
silvered Dial.

Length 5¼ ins.

Height 6½ ins.

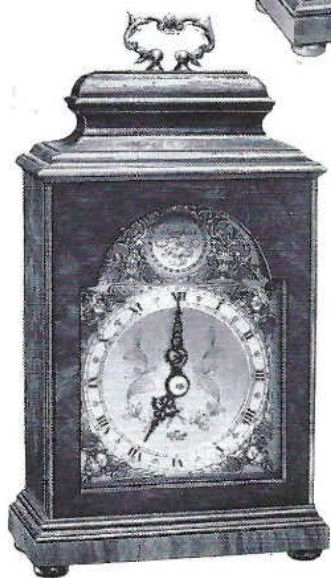
Depth 2¾ ins.

Each and every Elliott Clock carries the manufacturer's
unqualified guarantee against defective
workmanship and materials.

**DESIGNED BY EXPERTS
BUILT BY CRAFTSMEN**



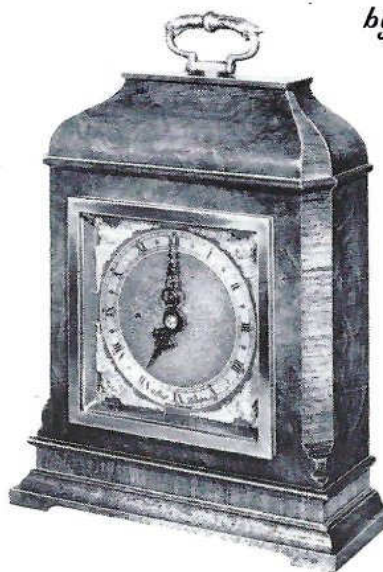
No. 2823
BURR WALNUT
4" antique Bezel,
antique cast
corner Dial.
Length 6 ins.
Height 9¼ ins.
Depth 3¼ ins.



No. 2891
BURR WALNUT
With antique cast
corner Dial.
Length 5 ins.
Height 9¼ ins.
Depth 3 ins.



No. 2825
BURR WALNUT
4" antique Bezel
and antique cast
corner Dial.
Length 6½ ins.
Height 9 ins.
Depth 3 ins.



No. 2894
MAHOGANY or
BURR WALNUT
With antique cast
corner Dial.
Length 5½ ins.
Height 8 ins.
Depth 3¼ ins.

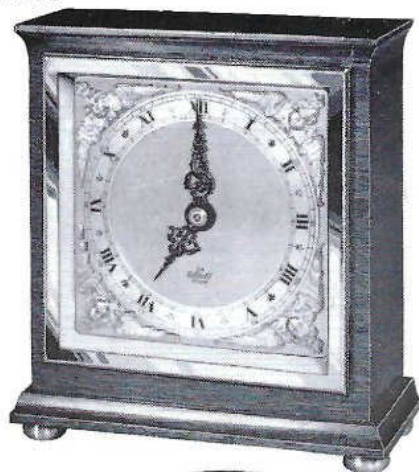


DESIGNED BY EXPERTS
BUILT BY CRAFTSMEN

DESIGNED BY EXPERTS
BUILT BY CRAFTSMEN



No. 3005
OAK,
WALNUT
or MAHOGANY
4" gilt Bezel
and corners,
silvered Dial.
Length 5 ins.
Height 5½ ins.
Depth 2½ ins.



No. 2937
MAHOGANY
4" gilt Bezel
gilt cast
corner Dial.
Length 5½ ins.
Height 6½ ins.
Depth 2¾ ins.



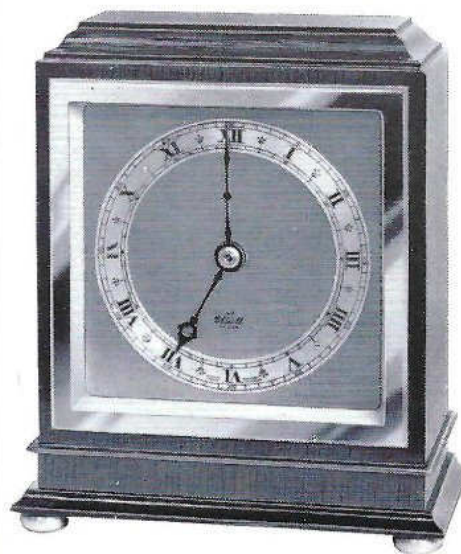
DESIGNED BY EXPERTS
BUILT BY CRAFTSMEN



No. 2951
WALNUT or
MAHOGANY
4" satin
brass Bezel,
silvered Dial.
Length 6½ ins.
Height 5¾ ins.
Depth 2¾ ins.



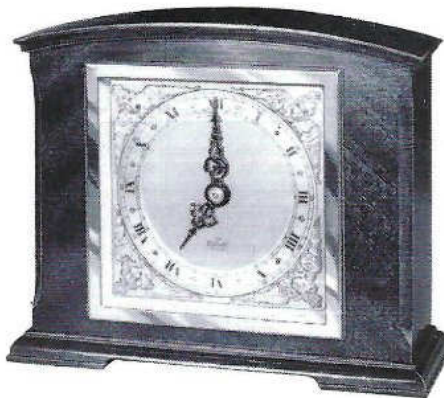
No. 2198
OAK,
WALNUT or
MAHOGANY
4" satin
brass Bezel,
silvered Dial.
Length 5 ins.
Height 6 ins.
Depth 2½ ins.



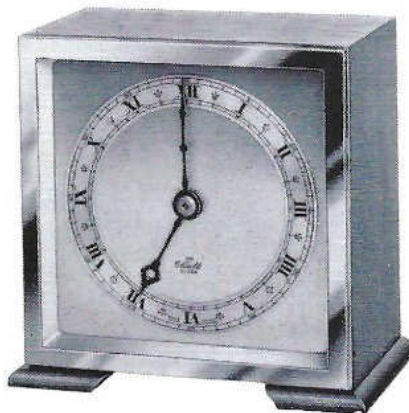
DESIGNED BY EXPERTS
BUILT BY CRAFTSMEN



No. 2998
 WALNUT or
 MAHOGANY
 4" gilt Bezel
 and corners,
 silvered Dial.
 Length 6 $\frac{3}{4}$ ins.
 Height 5 $\frac{3}{4}$ ins.
 Depth 2 $\frac{3}{4}$ ins.



No. 2920
 WALNUT
 4" satin brass
 Bezel, silvered Dial.
 Length 4 $\frac{1}{2}$ ins.
 Height 4 $\frac{3}{8}$ ins.
 Depth 2 $\frac{1}{2}$ ins.



DESIGNED BY EXPERTS
 BUILT BY CRAFTSMEN



No. 2916
 WALNUT with BURR WALNUT front
 4" gilt Bezel, gilt cast corner Dial.
 Length 8 $\frac{3}{4}$ ins. Height 5 $\frac{3}{4}$ ins. Depth 2 $\frac{3}{4}$ ins.

No. 2969
 MAHOGANY
 4" gilt Bezel,
 silvered engraved
 Dial.
 Length 5 $\frac{3}{4}$ ins.
 Height 6 $\frac{1}{2}$ ins.
 Depth 2 $\frac{3}{4}$ ins.



DESIGNED BY EXPERTS
 BUILT BY CRAFTSMEN

10

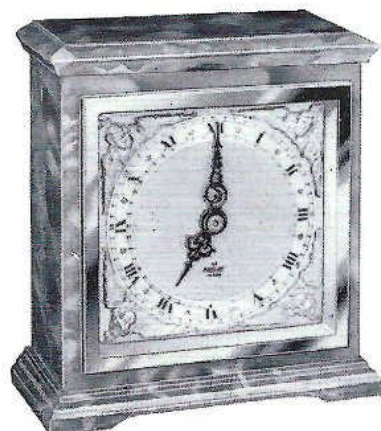
8 DAY LEVER DECORATIVE



No. 2982
GREEN

6" gilt Bezel, gilt
cast corner Dial.

Length 7½ ins.
Height 8¾ ins.
Depth 2¾ ins.



No. 3028

GREEN or WHITE

4" gilt Bezel
and corners,
silvered Dial.

Length 5 ins.
Height 5½ ins.
Depth 2½ ins.

MARBLE TIMEPIECES

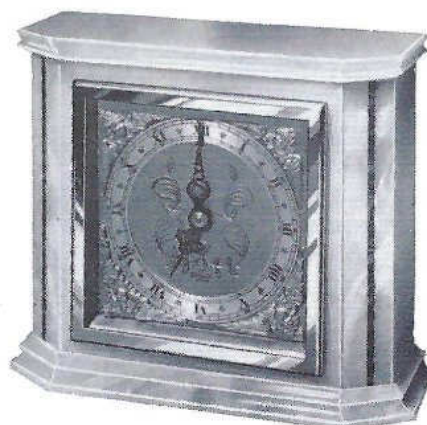
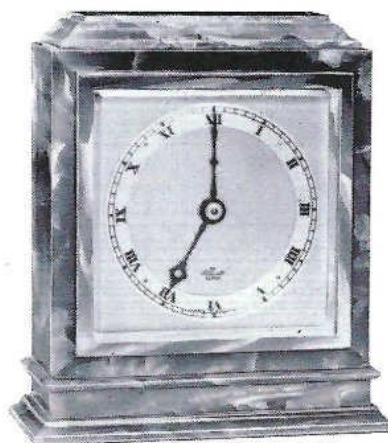
11



No. 2198
GREEN

4" gilt Bezel,
silvered Dial.

Length 5¼ ins.
Height 6 ins.
Depth 2½ ins.



No. 2951

WHITE and
MALACHITE
or GREEN

4" gilt Bezel, gilt
cast corner Dial.

Length 6½ ins.
Height 5¾ ins.
Depth 2¾ ins.

DESIGNED BY EXPERTS
BUILT BY CRAFTSMEN

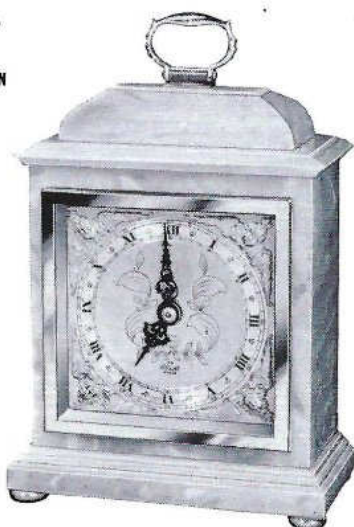
DESIGNED BY EXPERTS
BUILT BY CRAFTSMEN

12

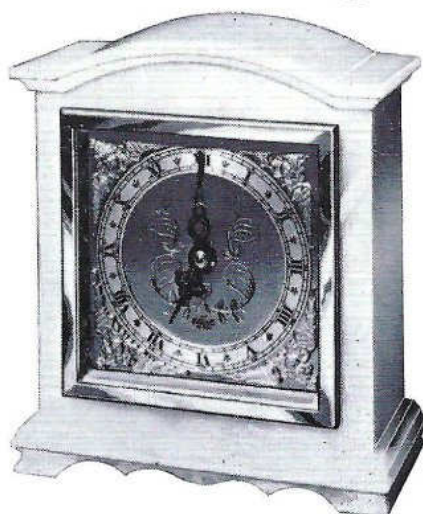
8 DAY LEVER DECORATIVE



No. 3029
GREEN or WHITE
4" gilt Bezel, gilt
cast corner Dial.
Length 5½ ins.
Height 8 ins.
Depth 2¾ ins.



No. 2937
GREEN or WHITE
4" gilt Bezel, gilt
cast corner Dial.
Length 5½ ins.
Height 6¼ ins.
Depth 2¾ ins.



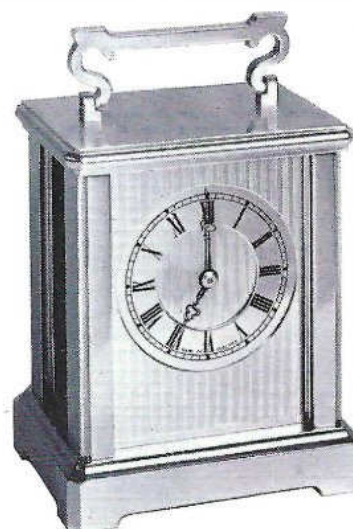
DESIGNED BY EXPERTS
BUILT BY CRAFTSMEN

MARBLE TIMEPIECES

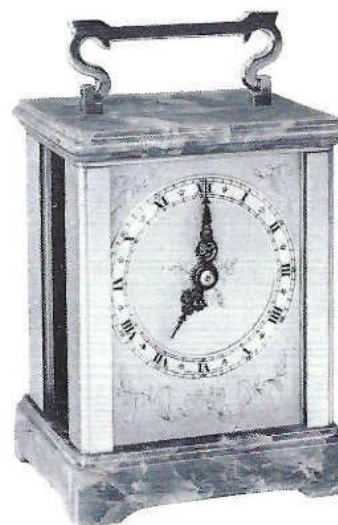
13



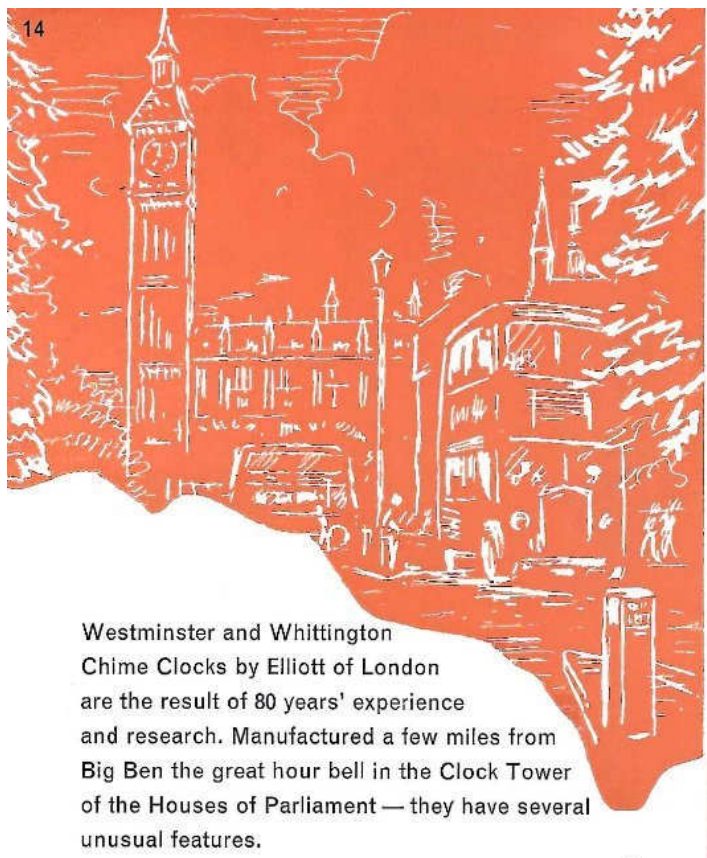
No. 3030
GOLD COLOUR
Anodised aluminium
case in the style of
the French carriage
clock. Silvered Dial.
Length 4¾ ins.
Height 7½ ins.
Depth 3¾ ins.



No. 3031
GOLD COLOUR
Anodised aluminium
and green case, gilt
engraved Dial.
Length 4¾ ins.
Height 7 ins.
Depth 3¾ ins.



DESIGNED BY EXPERTS
BUILT BY CRAFTSMEN



Westminster and Whittington Chime Clocks by Elliott of London are the result of 80 years' experience and research. Manufactured a few miles from Big Ben the great hour bell in the Clock Tower of the Houses of Parliament — they have several unusual features.

A unique action automatically switching off the chime at 11 p.m. until 7 a.m. ensuring the lightest sleeper is not disturbed at night. Either Chime — Westminster or Whittington — can be selected by the mere touch of a knob, while the chimes can be completely shut off by a silencing lever when not required. Every clock is fitted with a jewelled lever escapement, this ensures that there is no interruption to its accurate timekeeping, if moved when in action or set on an uneven surface.

Each and every Elliott Clock carries the manufacturer's unqualified guarantee against defective workmanship and materials.

GRANDMOTHER CLOCKS

15



No. 406

WALNUT,
MAHOGANY
or LACQUER
Antique cast
corner Dial.
Height 5 ft.



No. 410

WALNUT
Antique Dial.
Height 5 ft.



**DESIGNED BY EXPERTS
BUILT BY CRAFTSMEN**

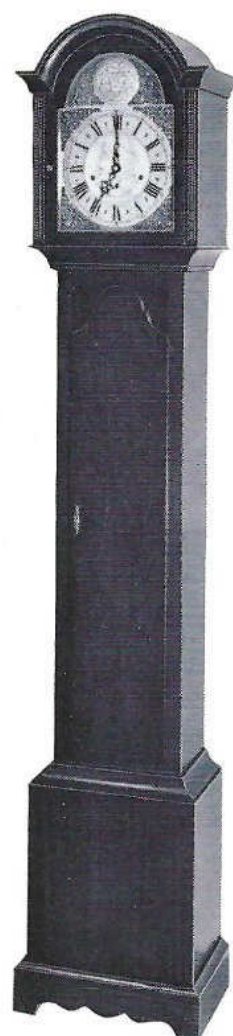


No. 413
BURR WALNUT
 Antique cast corner Dial.
 Height 5 ft. 4 ins.
 Also available in Mahogany, Oak or plain Walnut.

No. 413
 Lacquer case,
 Hand engraved gilt and silver Dial.
 Raised gilt numerals.
 Height 5 ft. 4 ins.



**DESIGNED BY EXPERTS
 BUILT BY CRAFTSMEN**



No. 416
WALNUT or MAHOGANY
 Antique cast corner Dial.
 Spring driven lever chime movement.
 Height 6 ft. 6 ins.

No. 418
 As 416 but with weight driven movement/pendulum and tubes, glass door as 402

Specially designed to meet the requirements of the modern compact labour saving house or flat. The smaller Grandfathers illustrated on this and the following page retain many of the characteristics of the old large Grandfather clock. Those illustrated on pages 17 and 18 are weight driven, with Westminster chimes on 1" diameter heavy gauge tube. No night silencing device is fitted to these clocks in order that the weights will fall fairly evenly.

**DESIGNED BY EXPERTS
 BUILT BY CRAFTSMEN**

GRANDFATHER CLOCKS

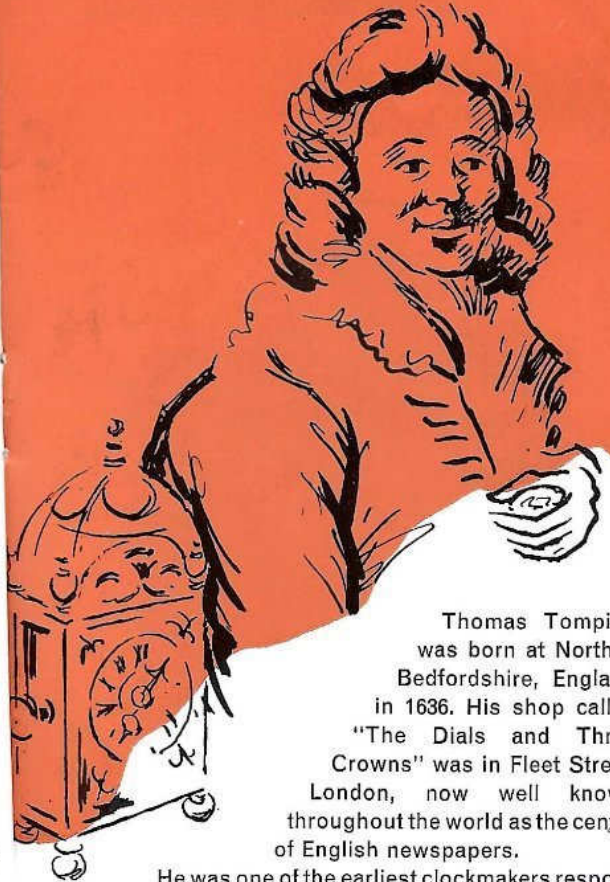


No. 404
FIGURED
WALNUT
Antique cast
corner Dial.
Height 6 ft.

No. 402
MAHOGANY
Antique cast
corner Dial.
Height 6 ft.



**DESIGNED BY EXPERTS
BUILT BY CRAFTSMEN**



Thomas Tompion was born at Northill, Bedfordshire, England in 1636. His shop called "The Dials and Three Crowns" was in Fleet Street, London, now well known throughout the world as the centre of English newspapers.

He was one of the earliest clockmakers responsible for raising the standard of English clock-making, some of his finest specimens were made in the late 17th century. Known as the Father of English Clockmaking he was leading watchmaker to the Court of King Charles II. Tompion died in 1713 and is buried in Westminster Abbey.

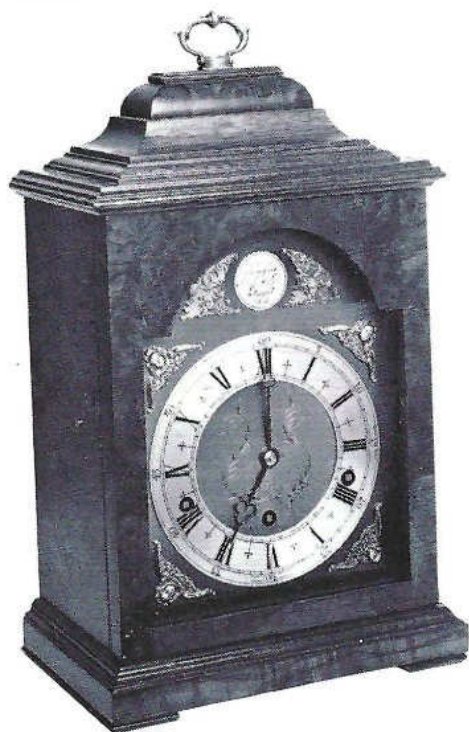
No. 5465 on page 27 is a reproduction of one of his finest Basket top patterns.

Each and every Elliott Clock carries the manufacturer's unqualified guarantee against defective workmanship and materials.

20

REPRODUCTION CHIMING CLOCK

by *Elliott* of
LONDON



BURR WALNUT case. Antique Dial.		
No. 5246 (illustrated)	No. 5461	No. 2822
CHIME	STRIKE	TIMEPIECE
Length 8½ ins.	6½ ins.	6½ ins.
Height 15½ ins.	11½ ins.	11¼ ins.
Depth 6 ins.	4½ ins.	3½ ins.

DESIGNED BY EXPERTS
BUILT BY CRAFTSMEN

21

REPRODUCTION CHIMING CLOCK

by *Elliott* of
LONDON



MAHOGANY or BURR WALNUT case. Antique Dial.		
No. 1016 (illustrated)	No. 5459	No. 1016
CHIME	STRIKE	TIMEPIECE
Length 10 ins.	6½ ins.	6½ ins.
Height 14½ ins.	9½ ins.	9½ ins.
Depth 6¼ ins.	4¾ ins.	3¼ ins.

DESIGNED BY EXPERTS
BUILT BY CRAFTSMEN

22

REPRODUCTION CHIMING CLOCK

by *Elliott of*
LONDON



No. 5453

Plain WALNUT or BURR WALNUT
Antique cast corner Dial, engraved centre with
raised silvered hour circle.
Length 8 $\frac{3}{4}$ ins. Height 12 $\frac{1}{2}$ ins. Depth 5 $\frac{3}{4}$ ins.

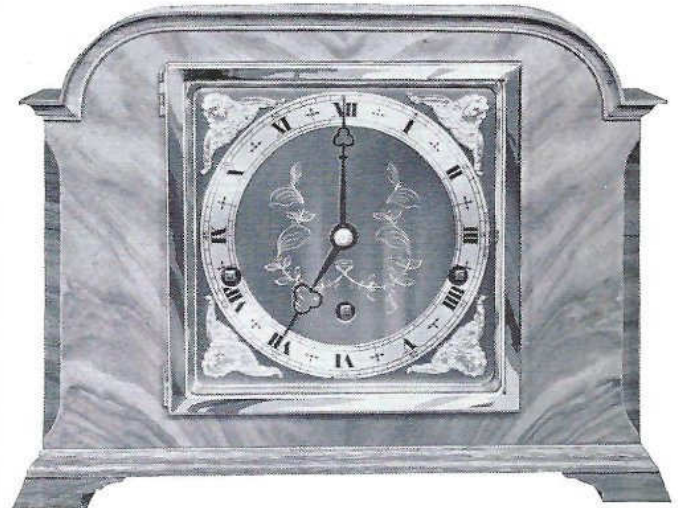
DESIGNED BY EXPERTS
BUILT BY CRAFTSMEN

23

8 DAY CHIMING CLOCK

by *Elliott of*
LONDON

Elliott Clocks are not mass produced.
Each clock is individually made and as-
sembled with every care and attention.



No. 5437

WALNUT

6" gilt Bezel and gilt cast corner Dial.
Length 11 $\frac{3}{4}$ ins. Height 9 $\frac{1}{4}$ ins. Depth 4 $\frac{3}{4}$ ins.

DESIGNED BY EXPERTS
BUILT BY CRAFTSMEN

24

8 DAY CHIMING CLOCKS



No. 5450
MAHOGANY
6" gilt Bezel,
gilt cast
corner Dial.
Length 8½ ins.
Height 9½ ins.
Depth 5 ins.



No. 5430
OAK
6" antique brass
Bezel and cast
corner Dial.
Length 8¾ ins.
Height 9 ins.
Depth 5 ins.

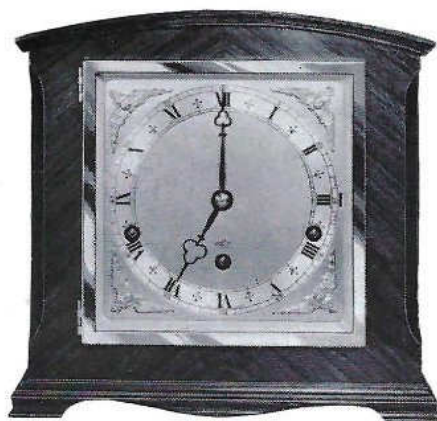
DESIGNED BY EXPERTS
BUILT BY CRAFTSMEN

8 DAY CHIMING CLOCKS

25



No. 5456
WALNUT
6" gilt Bezel
and corners,
silvered Dial.
Length 10 ins.
Height 9½ ins.
Depth 4½ ins.



No. 5455
WALNUT
6" gilt Bezel,
engraved gilt Dial.
Length 9 ins.
Height 10 ins.
Depth 5½ ins.



DESIGNED BY EXPERTS
BUILT BY CRAFTSMEN

26

REPRODUCTION CHIMING CLOCK

by *Elliott* of
LONDON



BURR WALNUT case. Antique cast corner Dial.

No. 1153 (illustrated)
CHIME
Length $8\frac{3}{4}$ ins.
Height $13\frac{3}{4}$ ins.
Depth 6 ins.

No. 5458
STRIKE
Length $6\frac{3}{4}$ ins.
Height $10\frac{1}{2}$ ins.
Depth $4\frac{1}{2}$ ins.

DESIGNED BY EXPERTS
BUILT BY CRAFTSMEN

27

REPRODUCTION CHIMING CLOCK

by *Elliott* of
LONDON



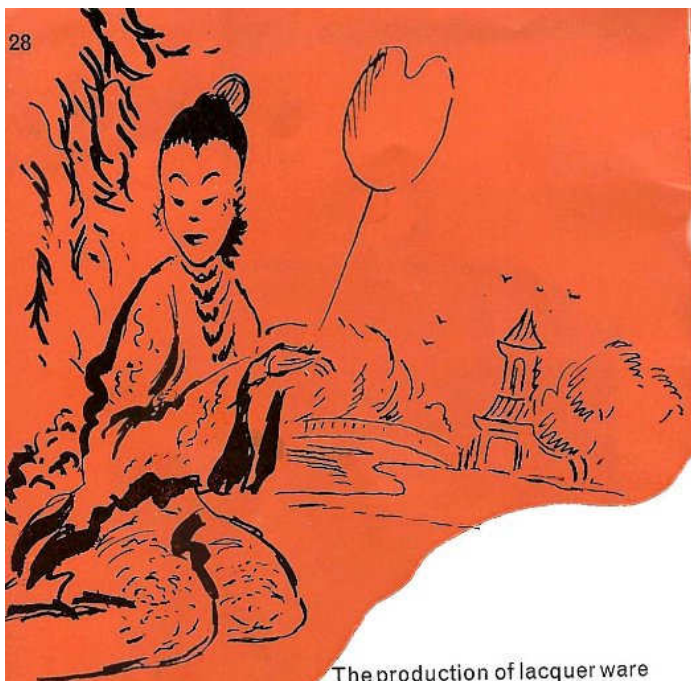
MAHOGANY Gilt cast corner Dial.

No. 5465 (illustrated)
CHIME
Length $8\frac{3}{4}$ ins.
Height $12\frac{1}{2}$ ins.
Depth $5\frac{1}{2}$ ins.

No. 5464
STRIKE
Length $6\frac{3}{4}$ ins.
Height $10\frac{1}{2}$ ins.
Depth $4\frac{1}{2}$ ins.

DESIGNED BY EXPERTS
BUILT BY CRAFTSMEN

28



The production of lacquer ware of decorative character originated in the Far East, where it has long been an important industry.

The decoration of the clock cases illustrated is carried out entirely by hand, by craftsmen who have acquired this age old skill which has been handed down from generation to generation.

Lacquer is a varnish made from shellac which is obtained from the Lac insects (*Coccus Lacca*) found in the forests of Assam and Thailand, to which is added colouring materials of Gold, Coral, Vermilion and many other colours giving most pleasing effects, the design and finish of the cases illustrated conform faithfully to this age old craft.

Each and every Elliott Clock carries the manufacturer's unqualified guarantee against defective workmanship and materials.

LACQUER CLOCKS

29



No. 2894

WHITE,
RED or BLACK
LACQUERED
TIMEPIECE

Gilt cast corner
Dial, engraved
centre.

Length $5\frac{1}{4}$ ins.

Height 8 ins.

Depth $3\frac{1}{4}$ ins.



No. 5437

WHITE, RED or BLACK LACQUERED CHIME
6" gilt Bezel and gilt cast corner Dial.

Length $11\frac{1}{2}$ ins. Height $9\frac{1}{2}$ ins. Depth $4\frac{1}{2}$ ins.

DESIGNED BY EXPERTS
BUILT BY CRAFTSMEN

30

LACQUER CLOCK

by **Elliott** of
LONDON



No. 5246 WHITE, RED or BLACK LACQUERED CHIME
Gilt cast corner Dial.

Length $8\frac{3}{4}$ ins. Height $15\frac{1}{2}$ ins. Depth 6 ins.

**DESIGNED BY EXPERTS
BUILT BY CRAFTSMEN**

31

WHITEHALL and GUILDHALL 8 Day CLOCKS

by **Elliott** of
LONDON



Top.

WHITEHALL Models,
available in Red, Black,
White Lacquer or
Polished Walnut cases.
Gilt Dial. Height $7\frac{1}{4}$ "
Length 4" Depth 2"

Bottom.

GUILDHALL Models,
available in Red, Black,
White Lacquer or
Polished Mahogany
cases. Gilt Dial. Height
6" Length $4\frac{1}{2}$ " Depth 2"

Whilst every endeavour is made to ensure the details of
this catalogue are correct, they cannot be guaranteed. We
reserve the rights to change and amend designs at short notice
to facilitate production.



F. W. ELLIOTT LTD.
UNION ROAD, CROYDON
CR9 2SB

Tel: 01-684 0066

The details in this catalogue are abridged – please ask
your retailer for further details.

3M.10.71

Printed in England

I would like to thank Ben Fulghum for sharing this catalogue.

[Clock Repair Main Page](#)