

Elliott Clock Catalogue 1974

ELLIOTT OF LONDON CLOCKS

Experience and craftsmanship of four generations are embodied in the production of every ELLIOTT CLOCK. For over three quarters of a century the name ELLIOTT has been synonymous with fine clockmaking; today in a well-equipped factory at Croydon, England, the tradition is being carried on by craftsmen highly skilled in creating fine clocks.

All stages of production are carefully supervised, every clock soundly constructed from best quality materials, finished and tested to the highest possible standard, ensuring peerless quality and value.

Whether your taste leans towards a modern or antique style, there is a model to suit all requirements—a model which is tasteful and pleasing in design, accurate and reliable in performance, a true reflection of the ELLIOTT tradition.

DESIGNED BY EXPERTS

BUILT BY CRAFTSMEN

10M 1/74

Printed in USA

New York 10, New York

8 DAY LEVER TIMEPIECES

3

by *Elliott* of
LONDON



No. 2983
WALNUT or
MAHOGANY
Antique Dial,
raised silvered hour
circle.
Height 8 $\frac{3}{4}$ "
Length 5 $\frac{1}{2}$ "
Depth 2 $\frac{1}{4}$ "



No. 2822
WALNUT or
MAHOGANY
Antique brass
mounted Dial with
silvered hour circle.
Height 11"
Length 6 $\frac{1}{2}$ "
Depth 3 $\frac{1}{2}$ "

DESIGNED BY EXPERTS
BUILT BY CRAFTSMEN

4

8 DAY LEVER TIMEPIECES

by *Elliott* of
LONDON

No. 2823
WALNUT or
MAHOGANY
Antique brass
mounted Dial with
silvered hour circle.
Height 9"
Length 6"
Depth 3½"



No. 2891
WALNUT
Antique brass
mounted Dial with
raised silvered hour
circle.
Height 9½"
Length 5"
Depth 3"

8 DAY LEVER TIMEPIECES

5

by *Elliott* of
LONDON

No. 2825
WALNUT or
MAHOGANY
Antique brass
mounted Dial with
raised silvered hour
circle.
Height 9"
Length 6½"
Depth 2½"



No. 2894
MAHOGANY
Antique Dial,
raised silvered hour
circle.
Height 8"
Length 5½"
Depth 3½"



DESIGNED BY EXPERTS
BUILT BY CRAFTSMEN

DESIGNED BY EXPERTS
BUILT BY CRAFTSMEN

6

8 DAY LEVER TIMEPIECES

by *Elliott* of
LONDON

No. 2937
MAHOGANY
4" gilt Bezel, gilt
Dial, raised
silvered hour circle.
Height 6½"
Length 5½"
Depth 2½"



No. 3005
WALNUT or
MAHOGANY
4" Bezel, silvered
Dial, raised hour
circle.
Height 5½"
Length 5"
Depth 2½"

DESIGNED BY EXPERTS
BUILT BY CRAFTSMEN

8 DAY LEVER TIMEPIECES

7

by *Elliott* of
LONDON



No. 2916
WALNUT
4" gilt Bezel, gilt cast corner Dial, engraved centre.
Height 5½" Length 8½" Depth 2½"

No. 2969
WALNUT or
MAHOGANY
Satin brass finish
4" Bezel, with
engraved silvered
Dial.
Height 6½"
Length 5½"
Depth 2½"



DESIGNED BY EXPERTS
BUILT BY CRAFTSMEN

8

8 DAY LEVER TIMEPIECES

by *Elliott of*
LONDON

No. 3012
MAHOGANY
Gilt Dial,
raised silvered hour
circle.
Height 9½"
Length 6"
Depth 3½"



No. 2978
WALNUT or
MAHOGANY
6" satin brass
Bezel, silvered Dial.
Height 9½"
Length 8½"
Depth 2½"

9

8 DAY LEVER TIMEPIECES

by *Elliott of*
LONDON

No. 3030
GOLD COLOUR
Anodised
aluminium case in
the style of the
French carriage
clock. Silvered Dial.
Length 4½"
Height 7½"
Depth 3½"



No. 2974
OAK
6" antique Bezel
and Dial.
Height 9½"
Length 7½"
Depth 2½"



DESIGNED BY EXPERTS
BUILT BY CRAFTSMEN

DESIGNED BY EXPERTS
BUILT BY CRAFTSMEN

10

8 DAY LEVER DECORATIVE

MARBLE TIMEPIECES

11

by *Elliott of*
LONDON

No. 2937

GREEN

4" gilt Bezel, gilt
cast corner Dial,
engraved centre
with raised silvered
hour circle.

*Also available in
White.*

Height 6½"
Length 5½"
Depth 3"



by *Elliott of*
LONDON

No. 3028

GREEN

4" gilt Bezel and
corners, silvered
Dial.

*Also available in
White.*

Height 5½"
Length 5"
Depth 2½"



No. 2982

GREEN

6" gilt Bezel, gilt
cast corner Dial.

Height 7½"
Length 8½"
Depth 2½"

No. 3029

GREEN

4" gilt Bezel, gilt
cast corner Dial.

*Also available in
White.*

Height 8"
Length 5½"
Depth 2½"



DESIGNED BY EXPERTS
BUILT BY CRAFTSMEN

DESIGNED BY EXPERTS
BUILT BY CRAFTSMEN

12



Westminster and Whittington Chime Clocks by Elliott of London, are the result of 80 years' experience and research. Manufactured a few miles from Big Ben, the great hour bell in the Clock Tower of the Houses of Parliament – they have several unusual features.

A unique action switching off the chime at 11 p.m. until 7 a.m. ensuring the lightest sleeper is not disturbed at night. Either Chime – Westminster or Whittington can be selected by a mere touch of a knob, while the chimes can be completely shut off by the night silencer lever when not required. Every clock is fitted with a jewelled escapement, this ensures that there is no interruption to its accurate timekeeping, if moved when in action or set on to an uneven surface.

Each and every Elliott Clock carries the manufacturer's unqualified guarantee against defective workmanship and materials.

GRANDFATHER CLOCK

13



8 day spring wound Westminster and Whittington movement, with jewelled lever escapement, and automatic night silencer action.

No. 416
WALNUT or MAHOGANY
Antique cast corner Dial.
Height 6' 6"

DESIGNED BY EXPERTS
BUILT BY CRAFTSMEN

14

GRANDMOTHER CLOCKS

GRANDMOTHER CLOCKS

15

by *Elliott* of
LONDON

by *Elliott* of
LONDON

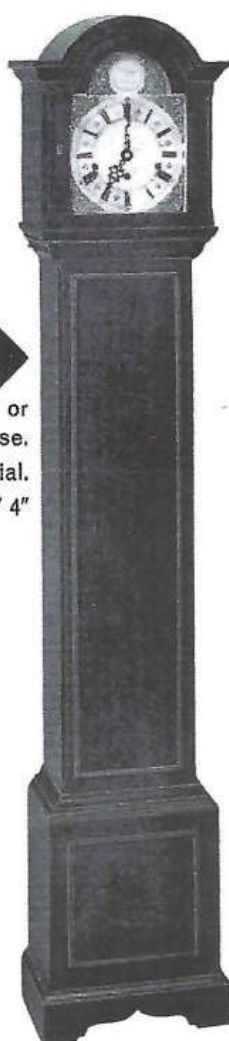


No. 413

WALNUT or
MAHOGANY case.
Antique Dial.
Height 5' 4"

No. 413

LACQUER case.
Gilt Dial.
Height 5' 4"



No. 406

MAHOGANY or
WALNUT case.
Antique Dial.
Height 5'

No. 410

WALNUT case.
Antique Dial.
Height 5'



DESIGNED BY EXPERTS
BUILT BY CRAFTSMEN

DESIGNED BY EXPERTS
BUILT BY CRAFTSMEN

16

GRANDMOTHER CLOCKS

by *Elliott* of
LONDON



◀ **No. 412**
MAHOGANY
case.
Antique Dial.
Height 5'



No. 411 ▶
WALNUT case.
Antique Dial.
Height 5' 6"

**DESIGNED BY EXPERTS
BUILT BY CRAFTSMEN**

17

WHITEHALL and GUILDHALL
MINIATURE 8 Day ALARM CLOCKS

by *Elliott* of
LONDON



Top.
WHITEHALL Models,
available in Red, Black,
White Lacquer or
Polished Walnut cases.
Gilt Dial. Height 7½"
Length 4" Depth 2"

Bottom.
GUILDHALL Models,
available in Red, Black,
White Lacquer or
Polished Mahogany
cases. Gilt Dial. Height
6" Length 4½" Depth 2"

Whilst every endeavour is made to ensure the details of this catalogue are correct, they cannot be guaranteed. We reserve the rights to change and amend designs at short notice to facilitate production.

20

MANTLE CHIME CLOCKS

by *Elliott* of
LONDON



6/4/74

No. 5246

WALNUT case. Antique Dial.
Height 15½" Length 8¾" Depth 6"

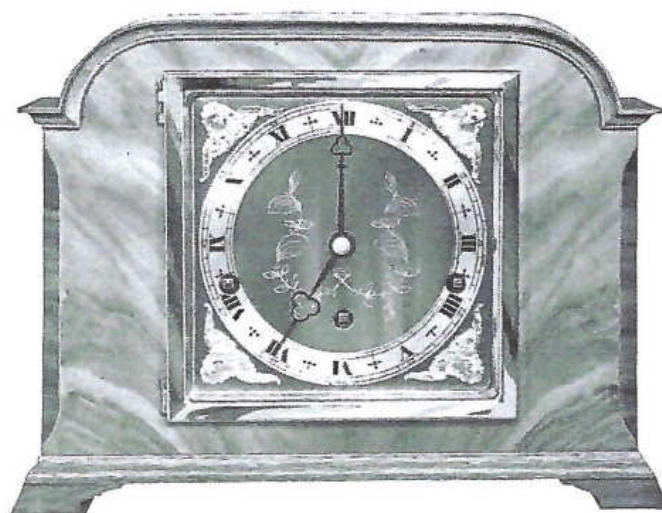
DESIGNED BY EXPERTS
BUILT BY CRAFTSMEN

21

MANTLE CHIME CLOCKS

by *Elliott* of
LONDON

Elliott Clocks are not mass produced;
each clock is individually made, and
assembled with every care and attention.



No. 5437

WALNUT case. Gilt Bezel and corner Dial,
raised silvered hour circle.

Height 9½" Length 12" Depth 5"

DESIGNED BY EXPERTS
BUILT BY CRAFTSMEN

22

MANTLE CHIME CLOCKS

by *Elliott* of
LONDON



No. 5452

WALNUT or MAHOGANY case. Antique Dial.
Height 12 $\frac{3}{4}$ " Length 9" Depth 5 $\frac{1}{4}$ "

DESIGNED BY EXPERTS
BUILT BY CRAFTSMEN

23

MANTLE CHIME CLOCKS

by *Elliott* of
LONDON



No. 5453

WALNUT or MAHOGANY case. Antique Dial.
Height 12 $\frac{3}{4}$ " Length 8 $\frac{3}{4}$ " Depth 5 $\frac{1}{4}$ "

DESIGNED BY EXPERTS
BUILT BY CRAFTSMEN

24

MANTLE CHIME CLOCKS

by *Elliott of*
LONDON

No. 5450
MAHOGANY
6" gilt Bezel
and Dial,
raised silvered
hour circle.
Height 9½"
Length 8½"
Depth 5"



No. 5430
OAK
6" Antique brass
Bezel and Dial,
raised silvered
hour circle.
Height 9"
Length 8½"
Depth 4¾"

DESIGNED BY EXPERTS
BUILT BY CRAFTSMEN

25

MANTLE CHIME CLOCKS

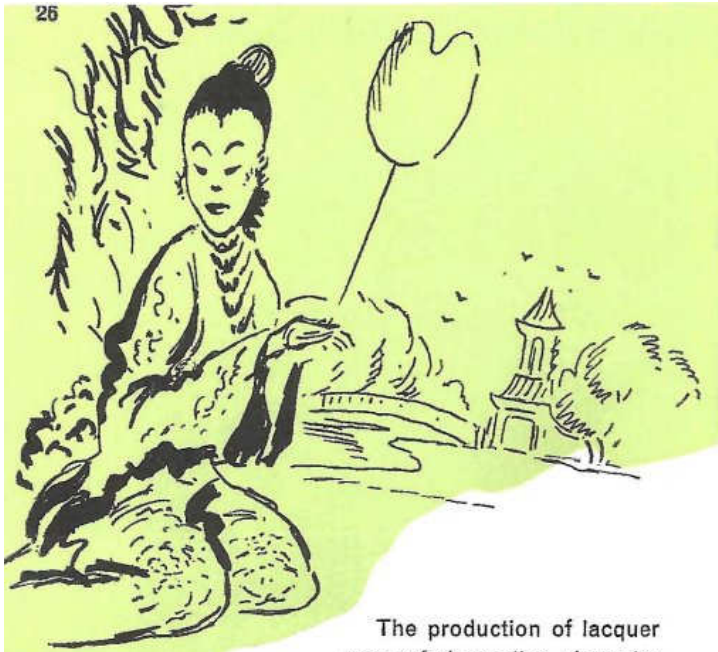
by *Elliott of*
LONDON



No. 5458
WALNUT
Gilt Dial with raised silvered hour circle,
half hour strike only.
Height 10¼" Length 6¾" Depth 4¼"

DESIGNED BY EXPERTS
BUILT BY CRAFTSMEN

26



The production of lacquer ware of decorative character originated in the Far East, where it has long been an important industry.

The decoration of the clock cases illustrated is carried out entirely by hand, by craftsmen who have acquired this age old skill which has been handed down from generation to generation.

Lacquer is a varnish made from shellac which is obtained from the Lac insects (*Coccus Lacca*) found in the forests of Assam and Thailand, to which is added colouring materials of Gold, Coral, Vermilion and many other colours giving most pleasing effects, the design and finish of the cases illustrated conform faithfully to this age old craft.

Each and every Elliott Clock carries the manufacturer's unqualified guarantee against defective workmanship and materials.

LACQUER CLOCKS

27

by *Elliott* of
LONDON



No. 2822

LACQUER, WHITE, RED or BLACK
Gilt cast corner Dial, with raised silvered
hour circle.

Height 11" Length 6½" Depth 3½"

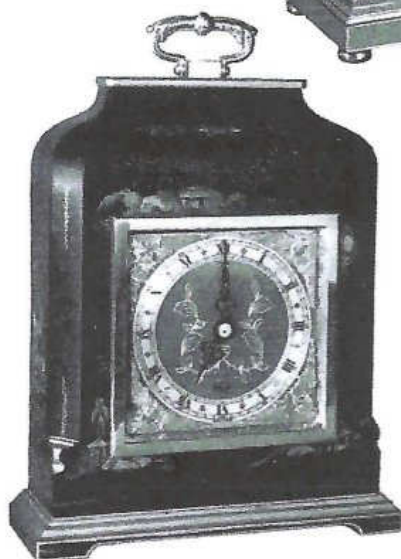
**DESIGNED BY EXPERTS
BUILT BY CRAFTSMEN**

28

LACQUER CLOCKS

by *Elliott of*
LONDON

No. 2823
LACQUER, RED
or BLACK
Gilt cast
corner Dial, with
raised silvered hour
circle.
Height 9"
Length 6"
Depth 3¼"



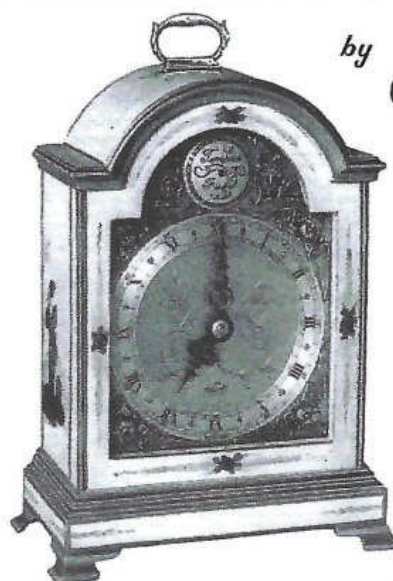
No. 2825
LACQUER,
WHITE, RED
or BLACK
Gilt cast corner
Dial with raised
silvered hour circle.
Height 9"
Length 6½"
Depth 3½"

29

LACQUER CLOCKS

by *Elliott of*
LONDON

No. 2894
LACQUER,
WHITE,
RED or BLACK
Gilt cast corner
Dial with raised
silvered hour circle.
Height 8"
Length 5¼"
Depth 3¼"



No. 2890
LACQUER,
WHITE,
RED or BLACK
Gilt Dial,
silvered hour circle.
Height 8"
Length 5"
Depth 3¼"



DESIGNED BY EXPERTS
BUILT BY CRAFTSMEN

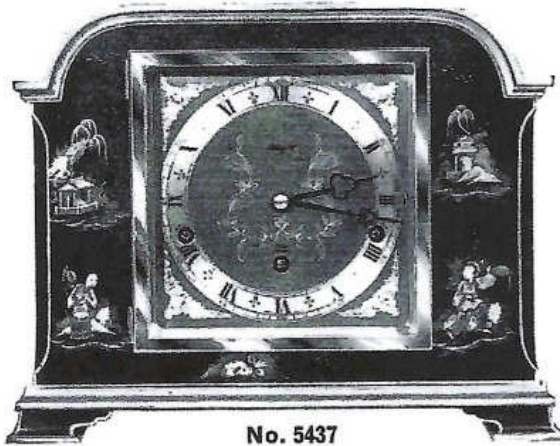
DESIGNED BY EXPERTS
BUILT BY CRAFTSMEN

30

LACQUER CLOCKS

by *Elliott of*
LONDON

No. 2978
LACQUER, RED
or BLACK
Gilt Dial.
Height 9½"
Length 8½"
Depth 2½"



No. 5437
LACQUER, RED or BLACK. Gilt cast corner Dial.
Height 9½" Length 12" Depth 5"

DESIGNED BY EXPERTS
BUILT BY CRAFTSMEN

31

LACQUER CLOCKS

by *Elliott of*
LONDON



No. 5246
LACQUER, RED, BLACK or WHITE. Gilt cast corner Dial.
Height 15½" Length 8¾" Depth 6"

DESIGNED BY EXPERTS
BUILT BY CRAFTSMEN

JANUARY 1974

RETAIL PRICE LIST

ALL ELLIOTT OF LONDON Clocks have 8 day Jewelled Lever Movements

Wood 8 Day Timepieces

1016	Mahogany 10"	\$290.00
2198	Mahogany	145.00
2822	Walnut or Mahogany	260.00
2823	Walnut or Mahogany	225.00
2825	Walnut or Mahogany	215.00
2849	Oak	170.00
2891	Walnut	275.00
2894	Mahogany 8"	275.00
2916	Walnut	245.00
2937	Mahogany	180.00
2968	Ebonized	125.00
2969	Walnut or Mahogany	175.00
2978	Walnut or Mahogany	195.00
2983	Walnut or Mahogany	200.00
3005	Walnut or Mahogany	160.00
3012	Walnut or Mahogany	285.00
**3030	Gilt Carriage Clock	250.00
	Wall bracket T/P size—Walnut or Mahogany	65.00

Marble 8 Day Timepieces

*2937	Green Marble	\$285.00
2982	Green Marble	315.00
*3028	Green Marble	270.00
*3029	Green Marble	375.00
3031	Green Marble Carriage Clock	335.00

½ Hour Bell Strike Clocks

5462	Walnut or Mahogany	\$325.00
5458	Walnut	425.00
5459	Mahogany (as 1016)	450.00

Miniature Alarm 15 Jewel

4000	Whitehall — Walnut (as 2822)	\$245.00
	" Lacquer, Black, Red, White	300.00
4001	Guildhall — Mahogany (as 1016)	245.00
	" Lacquer, Black, Red, White	300.00

*Available in White on Special Order

**Available in Silver on Special Order

Lacquer Clocks — Black, Red or White

2822	Time Piece	\$360.00
*2823	Time Piece	300.00
2825	Time Piece	300.00
2890	Time Piece	330.00
2894	Time Piece	340.00
*2978	Time Piece	260.00
2983	Time Piece	300.00
5246	¼ Chime W/W	925.00
*5437	¼ Chime W/W	785.00
*5453	¼ Chime W/W	840.00
5458	½ Hour Bell Strike	575.00

*Not Available in White

¼ Hour Whittington/Westminster Chime Mantle Clocks

All lever escapements Whittington/Westminster Chimes fitted with Night Chime Cut-out *

1016	Mahogany 15"	\$750.00
5246	Walnut	695.00
5430	Oak	545.00
5437	Walnut	615.00
5450	Mahogany	550.00
5452	Walnut or Mahogany	600.00
5453	Walnut or Mahogany	725.00
	Wall Bracket Chime Size—Walnut or Mahogany	75.00

Grandmother Chime Clocks

406	Mahogany 5'	\$1325.00
406	Lacquer, black or red 5'	1900.00
410	Walnut 5'	2350.00
411	Walnut 5' 6"	2500.00
412	Mahogany 5'	2500.00
413	Walnut 5' 4"	1625.00
413	Lacquer, black or red 5' 4"	3000.00
416	Mahogany Grandfather 6' 6"	1900.00

New York 10, New York

BUILT BY CRAFTSMEN

I would like to thank Ben Fulghum for sharing this catalogue.

[Clock Repair Main Page](#)